

## Major International Chemical Company Turns to ENECON for Help in Solving Serious Corrosion Issues



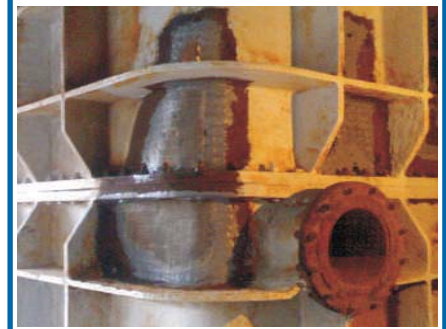
This 20-year-old preheater located at a soda ash manufacturing plant in India had been suffering from severe chemical attack and erosion damage.

ENECON India was contacted to help find a solution to this problem as well as to protect this preheater from future corrosion damage.

When the surfaces were grit blasted, large holes in the steel were uncovered and these had to be repaired immediately. Welding was not possible due to the potential for further damage to the thin metal surfaces. The ENECON field engineers, therefore, recommended an unconventional repair procedure: stainless steel wire mesh was used to bridge the large holes in the steelwork and **DurAlloy** (224 kg.) was used to permanently repair these areas.



After all holes were repaired, 2 coats of **ENESEAL CR** (280 kg.) were used to protect all of the exterior surfaces from the aggressive environment at this facility.



The plant's management was extremely satisfied with the outcome of this project. This preheater was put back into service immediately and preparations are being made to repeat this repair/protection project on another of the plant's preheaters.

ENECON Ibérica · C/ St. Gervasi de Cassoles, 96-98 entlo. 3ª · 08022 Barcelona  
· Telf: 93 211.15.30 · Fax: 93.253.11.31  
Website: [www.proenecon.com](http://www.proenecon.com) · Email: [eneconib@proenecon.com](mailto:eneconib@proenecon.com)