

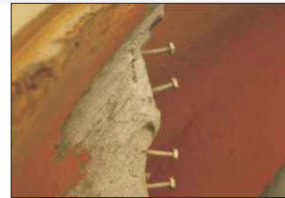
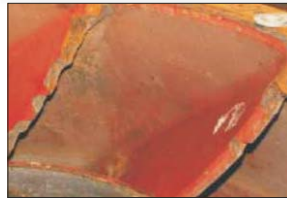
A major German wastewater treatment facility had experienced some corrosion damage on the guide veins of a large vertical spiral cage pump. The guide veins of the housing were severely damaged after some concrete blocks were accidentally left in the intake duct following some repair work.

NovoTech, the local ENECON Distributor in Germany, was called in to find a solution to this serious problem. It was decided that they would re-build the edges of the guide veins of the pump with DurAlloy. To enhance the strength of the DurAlloy, hexagonal screws were driven in to the edges of the damaged guide veins. Then DurAlloy was used to build up the edges.

After the DurAlloy had cured, the edges of the guide veins were ground to restore their original shape. The rest of the pump was then grit blasted both inside and out. Following the grit blasting, two coats of CHEMCLAD SC were applied. The inlet elbow of the pump was then painted green to match the color code of the facility.



German Wastewater Treatment Facility Selects DurAlloy & CHEMCLAD To Repair Large Vertical Spiral Cage Pump



ENECON Ibérica · C/ St. Gervasi de Cassoles, 96-98 entlo. 3^a · 08022 Barcelona
· Telf: 93 211.15.30 · Fax: 93.253.11.31
Website: www.proenecon.com · Email: eneconib@proenecon.com