

## California Refinery Reclaims Severely Damaged Salt Water Pump

After carrying out some less extensive repairs to a similar split case pump the year before, this major refinery in the San Francisco area turned immediately to ENECON. When this salt water pump was opened up for inspection and found to be badly in need of rebuilding.

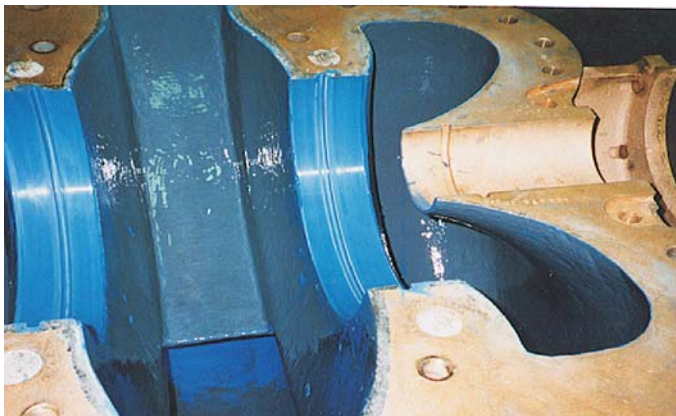
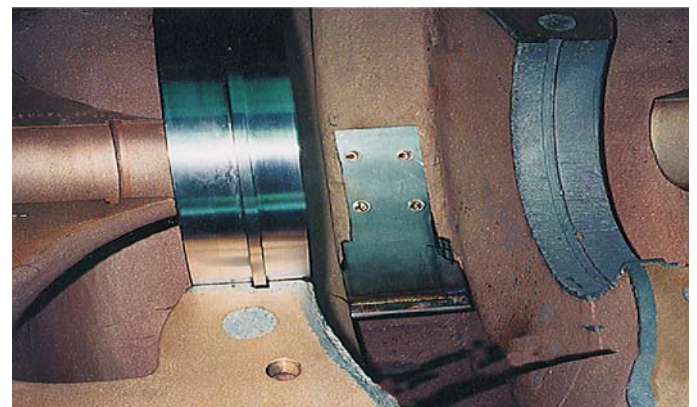
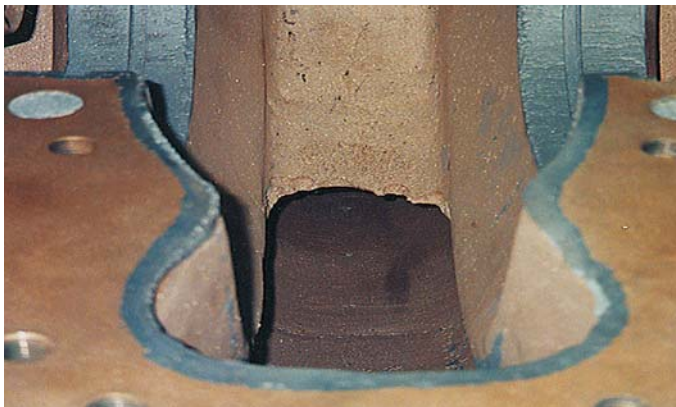
The cut water was found to be severely eroded. In addition, a previous coating in the pump had proven ineffective and was peeling off after being eroded and undercut by the seawater.

A new cut water was fabricated from stainless steel, and held

in place with CeramAlloy plus mechanical fasteners. All wet areas were then rebuilt and coated with the CeramAlloy system.

The CeramAlloy was also used to rebuild the ring seats - creating a perfect fit with the new rings - **without the need for machining.**

The entire rebuilding project took just two days and the engineers are completely satisfied with the time saving, cost effective solution provided by the CeramAlloy system.



ENECON Ibérica · C/ St. Gervasi de Cassoles, 96-98 entlo. 3ª · 08022 Barcelona  
· Telf: 93 211.15.30 · Fax: 93.253.11.31  
Website: [www.proenecon.com](http://www.proenecon.com) · Email: [eneconib@proenecon.com](mailto:eneconib@proenecon.com)