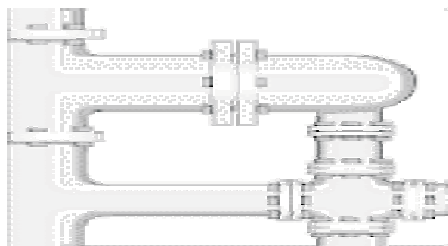


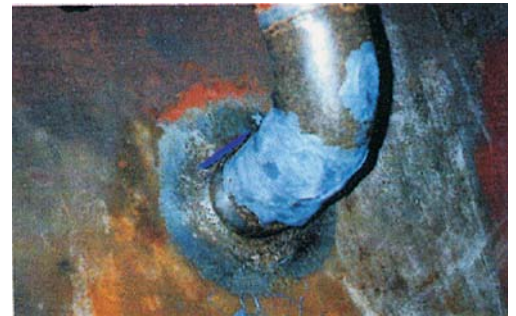
Piping Repairs?... No Problem! It's as simple as 1-2-3 with ENECON METALCLAD Systems



This severely pitted and corroded pipe elbow in the salt water fire fighting system on a ship proves no match for the capabilities of ENECON METALCLAD



1



The area to be repaired is first thoroughly roughened using a grinder and rotary file. Then, using stainless steel mesh to bridge the actual holes, mixed METALCLAD SpeedAlloy is applied over these areas.

2



METALCLAD DurAlloy is then applied over the entire area, followed by Reinforcement Tape to "spiral wrap" the entire repair and more DurAlloy to completely cover the repaired area.

3



The application is finished off with METALCLAD CeramAlloy CL+ to encapsulate the DurAlloy and to protect any "bare metal" areas exposed during the surface preparation process.