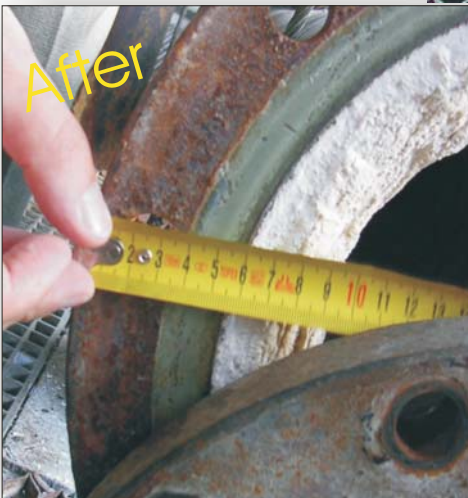
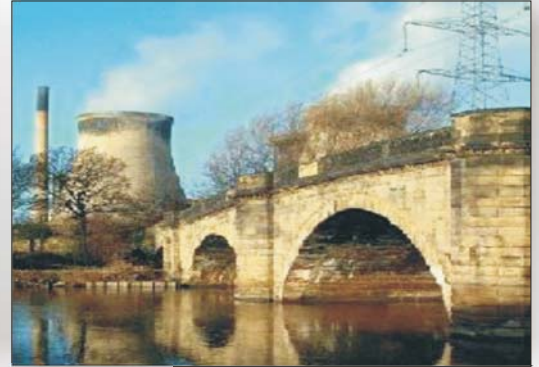




## ENEFLOW Reduces Scale Problem At Polish Power Plant



The maintenance engineers at this large power station - one of the biggest - in Poland had been experiencing a very severe mineral (lime) scale problem in their cooling water lines which carry water from a nearby lake. This scaling was so severe that it often rendered the pipes "useless" necessitating extensive cleaning or replacement.

The ENECON Poland Engineering Team suggested an unconventional solution: an ENEFLOW Fluid Dynamic Power Cell installation consisting of 5 pair of ENEFLOW 5000's.

After just two months, a significant reduction of scale was observed in the 270 mm (about 11 in) diameter pipe to

the amazement of the plant engineers. Normally, they would have anticipated an *increase* in lime scale build-up during these same two months.

The plant engineers are pleased with the results and are looking for other applications for our ENEFLOW systems.