

## A Major Oil Refinery in Texas Puts ENEFLOW Power Cells to the Test ... With Incredible Results



The plant engineers at this huge refinery in Texas experience serious mineral scale build-up problems in many of their fluid flow components due to the hard water found in the area.

The local ENECON Sales Representative recommended an unconventional approach to alleviating the plant's scaling problems. They suggested installing a set of **ENEFLOW Fluid Dynamic Power Cells** to see if these high performance magnetohydrodynamic systems could solve some of the plant's problems.

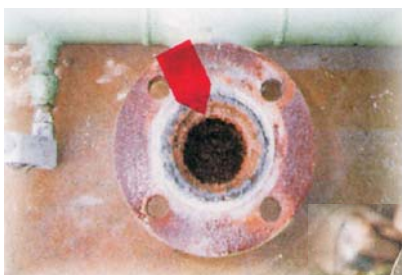
A particularly troublesome heat exchanger system was

selected by the plant engineers for the test.

Pictures were taken prior to the installation of the ENEFLOW system. Sixty days later the results observed were simply extraordinary.

The photos taken after the two-month test period were able to attest to the incredible performance of the ENEFLOW Fluid Dynamic Power Cells in controlling the refinery's severe mineral scale problems -- without the need for chemicals or complicated equipment.

***ENEFLOW systems offer commercially proven and cost effective solutions to fluid treatment.***



**Before...**



**60 Days Later...**