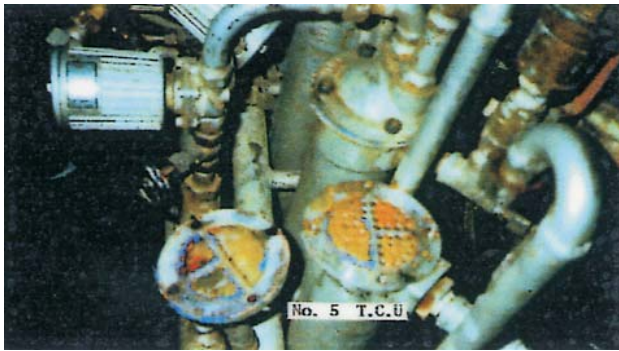


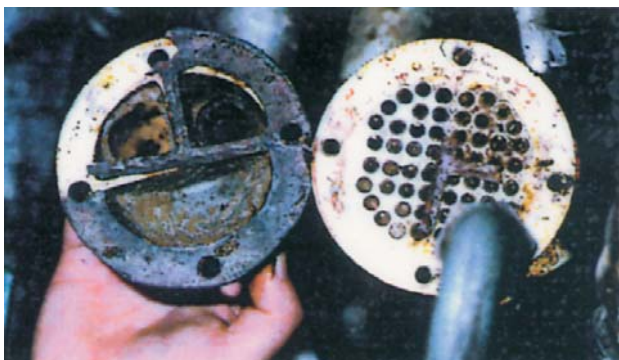
Largest Tire Manufacturer in Korea calls ENEFLOW Performance... "Miraculous!"



Typical mineral scale build-up on T.C.U.'s



ENEFLOW
5000 and
ENEFLOW
1000
installed to
protect
T.C.U.'s



Mineral scale on T.C.U. completely eliminated in just one month.

The largest tire manufacturer in Korea had mineral scale build-up problems caused by hard water. This was an ever present maintenance problem at their plant.

When the technical team from ENECON Korea approached the plant engineers about using ENEFLOW Fluid Dynamic Power Cells to help control some of those problems, they were met with at least some degree of polite skepticism.

But, then again, the plant engineers had very little to lose by trying the ENEFLOW system...and they had much to gain if it worked!

A bank of temperature control units or T.C.U.'s were selected to conduct an evaluation. These critical heat exchangers were scaling up badly and

had to be cleaned every few months in order to insure that the rubber products the company produced on this particular line would not be exposed to excessive heat in the pressing cycle.

One pair of ENEFLOW 5000's was installed on the main cooling water line feeding the bank of T.C.U.'s and a pair of ENEFLOW 1000's was installed as a "booster" to give additional protection to T.C.U. #5.

The results after just 30 days of service were "miraculous" according to the plant engineers! The photos speak for themselves.